



FEDERAZIONE NAZIONALE
IMPRESSE ELETTROTECNICHE
ED ELETTRONICHE



CONFINDUSTRIA

PUNTO ITALIA at **HANNOVER MESSE 2015**

ITALIAN COMPANIES PROFILES **HALL 12 • STAND D35**



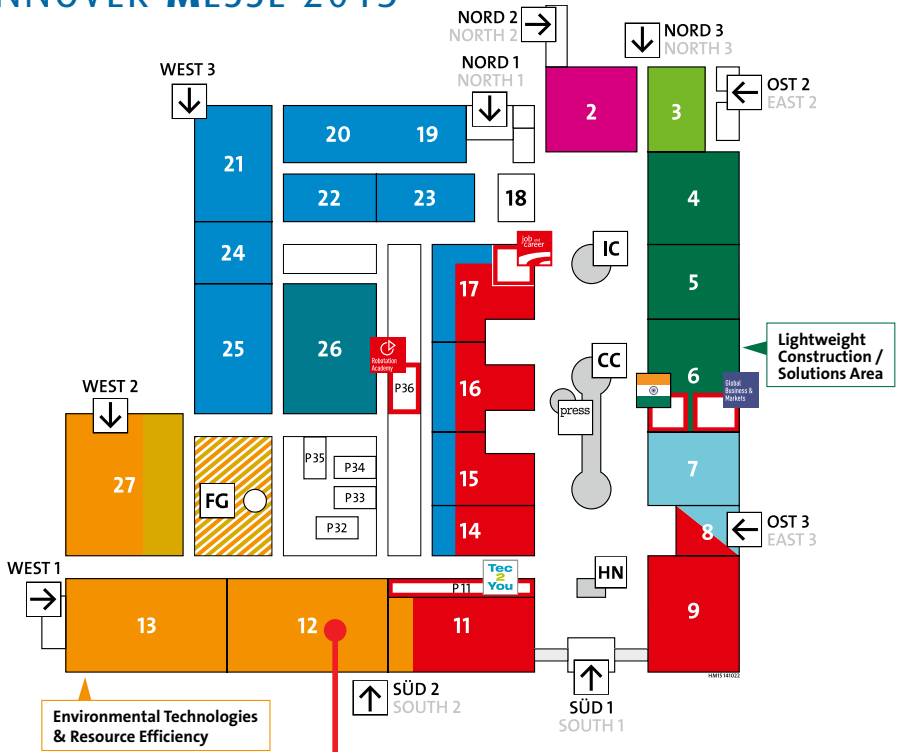
TABLE OF CONTENTS

FEDERAZIONE ANIE	6
CONSORZIO CONELEX	7
PUNTO ITALIA AT HANNOVER MESSE 2015	9
CABUR S.r.l.	10
COL GIOVANNI PAOLO S.p.A.	11
CONTRADE S.r.l.	12
DKC EUROPE S.r.l.	13
ESA ELETTRONICA S.p.A.	14
F.I.L.M.S S.p.A. - DIVISIONE CELSIA (OMCD)	15
IMEQUADRI DUESTELLE S.p.A.	16
NEW AREL S.r.l.	17





HANNOVER MESSE 2015

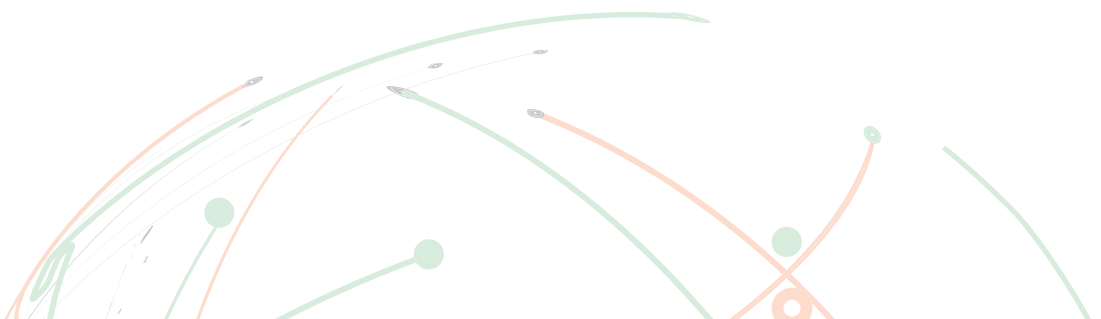


WE ARE HERE

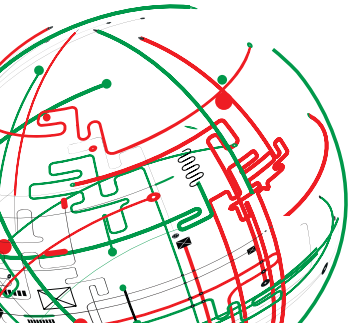
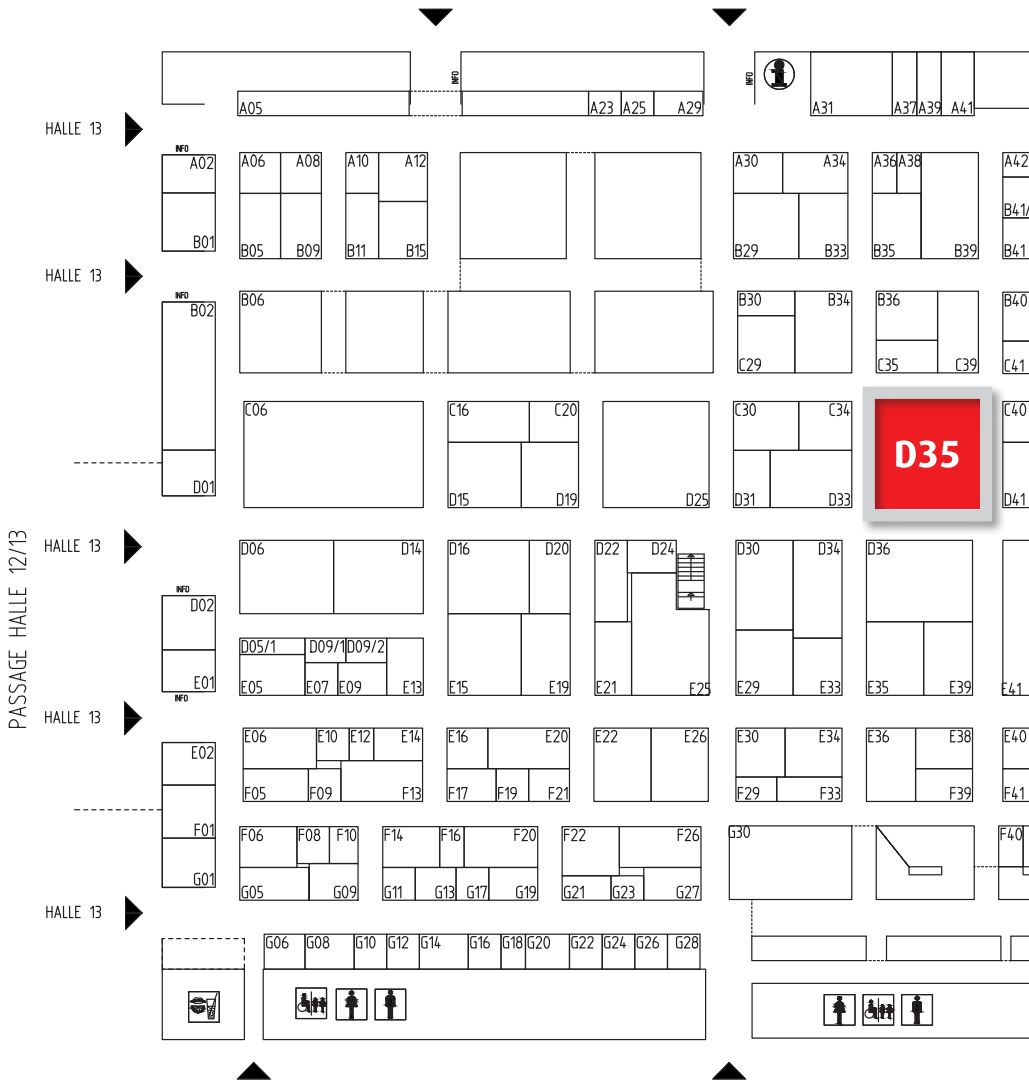




PUNTO ITALIA - FLOOR PLAN



PUNTO ITALIA AT HANNOVER MESSE 2015 - HALL 12 FLOOR PLAN





Stand / as of: 01-2015
 Deutsche Messe All rights reserved



FEDERAZIONE ANIE

VISIT US AT HALL 12 - STAND D35

Federazione ANIE is a Confindustria member representing the Electrical and Electronic Engineering Manufacturing companies operating in Italy. ANIE is an active and recognised interlocutor of the stakeholders who influences framework policies in Italy and abroad and offers to Member Companies a platform where they can confront with a whole community of industries.

ANIE, with over 1,200 member companies, represents the following Industry sectors:

Power Production including Photovoltaic technologies, Power Transmission and Power Distribution, Electrified Transports, Lift and Escalators, Lighting, Cables and Wire, Components and Devices for Electrical Installation, Household Appliances and Catering Equipment, Electronic Components, Automation and Instrumentation, Security, Fire Safety and Building Automation, Motion and Power Transmission Systems.

ANIE industry in figures for 2013:

- 56 billions € of global turnover
- 29 billions € of export (55,2% on global turnover)
- 410,000 employees



FEDERAZIONE NAZIONALE
IMPRESE ELETTROTECNICHE
ED ELETTRONICHE



CONFINDUSTRIA

FEDERAZIONE ANIE | Viale V. Lancetti, 43 • 20158 Milano (MI) • Italy

Tel. +39 02 3264 397 • Fax +39 02 3264 212

internazionale@anie.it • www.anie.it • www.italiantech.com

Contact • **Mariarosaria Fragasso • Devis Friso**

CONSORZIO CONELEX

VISIT US AT HALL 12 - STAND D35

CONELEX is the Export Consortium born in 2003 from an initiative by a number of small and medium-sized companies Members of ANIE and operating in the electrical, electronic, lighting and ICT sector, willing to export their product technology, quality reliability and industrial design worldwide. In order to make their activities on the international markets more synergic and effective, these companies founded the consortium so as to provide themselves with market-specific support and develop dedicated promotional activities.

CONELEX member companies are:

CABUR S.r.l. www.cabur.eu

COMAR CONDENSATORI S.p.A. www.comarcond.com

ELETTROMECCANICA ADRIATICA S.p.A. www.adriaticaspa.it

FITRE S.p.A. www.fitre.it

FIVEP S.p.A. www.caribonigroup.com

IMEQUADRI DUESTELLE S.p.A. www.imequadriduestelle.it

POGLIANO BUSBAR S.r.l. www.blindosbarra.com

S.E.A. SOCIETÀ ELETTROMECCANICA ARZIGNANESE S.p.A.

www.seatrasformatori.it

SIEL S.p.A. www.sielups.com

CONELEX
ITALIAN ELECTRO-EXPORT INDUSTRIES CONSORTIUM 

CONSORZIO CONELEX | Viale V. Lancetti, 43 • 20158 Milano (MI) • Italy

Tel. +39 02 3264 227 • Fax +39 02 3264 212

conelex@anie.it • www.conelex.it

Contact • **Mariarosaria Fragasso**





FEDERAZIONE NAZIONALE
IMPRESSE ELETTROTECNICHE
ED ELETTRONICHE



CONFINDUSTRIA

PUNTO ITALIA AT **HANNOVER MESSE 2015**

ITALIAN COMPANIES PROFILES
HALL 12 • STAND D35



Born in 1952, leading manufacturer of terminal Blocks for electrical boards in Italy, ISO 9001 & 14001 certified, **Cabur** offers systems and solutions for the connection and distribution of energy, a wide range of switching power supplies, electronic components for electrical panels, connectors and other accessories for photovoltaic installations, as well as industrial marking systems.



Products:

1. Terminal Blocks;
2. Electronic products for Electrical Panels (power supply, relay, converter);
3. Industrial marking system;
4. Photovoltaic products.



CABUR S.r.l. | Località Isola Grande, 45 • 17041 Altare (SV) • Italy
Tel. +39 019 58999 220
Fax +39 019 58999 280
exportsales@cabur.it • www.cabur.eu
Contact • Eros Gulli

COL Giovanni Paolo SpA established in 1920, has assumed, during the years, a prestigious position in the Electro Technical, Electro Mechanical and Plant Engineering fields consolidating its position in the world market, thanks to a constantly diversification. It has put in action a growth policy with the acquisition of companies in the Electronic, Environment, Systems, Railways and Electromechanical fields, to offer a complete range of products and services, with elevated technological contents.



Products:

Ring Main Unit Vacuum Circuit Breaker, Ring Main Unit with Fuses, Ring Main Unit Extensible, Three Pole VCB, Three Pole SF6, Pole Mounted Switch Disconnector, IR3 SF6, Modular Enclosed Switchboards, Switchgears and Switchboards for Electrical Energy, MV Circuit Breakers and Isolating Switches, Electrical Engines, Electric Protection, Power Electronics – Uninterruptible Power Source (UPS), Peripheral Unit, Equipment for Plants and Substations, Relays, Measurement Transduces, Switch Closure, Bay Control and Monitoring Unit, Electrical Networks Monitoring, RGDAT, SCADA System.

COL GIOVANNI PAOLO S.p.A. | HEADQUARTER
Via Fratelli Ceirano, 20 • 10024 Moncalieri (TO) • Italy
Tel. +39 011 6474258 • Fax +39 011 6474546

MEDIUM VOLTAGE DIVISION | Strada Provinciale 14,
93/95 - 95032 Piano Tavola (CT) • Italy
Tel. +39 095 7133088 • Fax +39 095 7131794
col@colgp.it • www.colgp.it

Contact • Paolo Lo Castro • Salvatore Mastroeni



ZOTUP provides the highest quality products in the field of protecting electrical and electronic equipment from overvoltages.



Products:

1. Surge protective devices for low, medium and high voltage.
2. Surge protection for PV plant, Wind Turbine, Data Center and LED lighting.



CONTRADE S.r.l. | Via Depretis, 11 • 24124 Bergamo (BG) • Italy
Tel. +39 035 361 035 • Fax +39 035 36 025
info@zotup.com • www.zotup.com
Contact • Andrea Passavanti

DKC group was established in 1998 and today it is one of the leading manufacturers of cable tray systems, products for power distribution and automation worldwide. Developing constantly its manufacturing and distribution network, DKC sets a goal of providing the international market with high quality products. Many of the products introduced by DKC group are innovative for the electrical market. Thanks to a good deal of work dedicated to new materials and development of new products DKC may boast a wide list of patents.



Products:

Metal cable trays; protection systems for electrical cables; fiberglass-reinforced plastic cabinets; busway systems; metal enclosures for electric boards; coolers for electrical enclosures; polycarbonate boxes; UPS.

DKC EUROPE S.r.l. | Via Libertà, 207
28043 Bellinzago Novarese (NO) • Italy
Tel. +39 0321 989898

info@dkceurope.eu • www.dkceurope.eu

Contact • Flavio Regosa • Alessandro Bacchiavini



ESA Automation is a company aware and focused on the growing needs of the industrial automation world, in which it has been operating for more than 40 years.

The company is present throughout the world with branches in Germany, Spain, USA, India, China and Turkey, and with a wide international network of distributors. ESA Automation offers a wide range of HMI, SoftPlc, I/O, IPC, Router, Dem, Data Manager, Energy Control Software and last generation SCADA products. High-tech solutions for Industrial Automation, designed to guarantee maximum efficiency in any field of application.



Products:

- Esaware EW800 DEM (Distributed Multifunction Meter) performs an accurate monitoring of the energy usage and line quality of a three-phase load (up to the level of a single machinery).
- Esaware EW900 Data Manager is a data collector able to manage a network of Distributed Multifunction Meters (DEM) in order to monitor in a distributed way the plant energy consumption.
- Energyaware includes all the functionalities of an advanced energy management system: Power consumption monitoring; Graphic data visualization; Secure access to data series stored in the database from remote using http protocol

ESA elettronica S.p.A. | Via P. Masciadri 4/A
22066 Mariano C.se (CO) • Italy
Tel. +39 031 757 400
Fax +39 031 751 777

info@esa-automation.com • www.esa-automation.com
Contact • Fabio Massimo Marchetti • Zoltan Berkessy

Celsia is a powered brand of Group OMCD, which have been producing for over 50 years tungsten-based sinters, brazing alloys and electrical contacts for medium and high voltage.

We offer customized and innovative solutions, with the main purposes of reducing the usage of raw materials, improve quality and fulfill our customers.

We own a modern and efficient R&D laboratory, that supports both production quality control and development of new products.



Sintered parts



Electrical contacts

Products:

Sintered parts:

- Electrodes for the production of electrowelded wire mesh.
- Electrodes for diamond tools sharpening.
- Electrodes for EDM die-sinking machines.

Electrical contacts:

- Electrical contacts for medium and high voltage switches.
- Electrical contacts for medium and high voltage disconnecting devices.

Brazing alloys:

- Items for the goldsmith sector, glasses-making, clock-making, precision mechanics.

F.I.L.M.S S.p.A. – CELSIA division | via Megolo, 52

28877 Anzola d'Ossola (VB) • Italy

Tel. +39 0323 836384

Fax +39 0323 836409

info.celsia@omcd.it • www.celsia.it

Contact • Elisa Olzeri • Gunter Rodek





Imequadri Duestelle is part of IME S.p.A. Group, operating on the market since more than 50 years. Its headquarter is based in Ugnano (BG) near Milan, in a factory of more than 25,000 sqm (16,000 sqm indoor). Here are located sales, technical offices and production plants, with metalsheet forming, mounting, wiring departments, prototypes laboratories and testing rooms. Imequadri Duestelle is certified ISO 9001:2008 and ISO14001:2004 and the first ISO certification dates back to 1993.

Products:

The Switchgear Division designs and produces:

- Polimeta LV Power Centers;
- Multicontrol LV MCC;
- Normoclad MV Metal Clad LSC2B-PM;
- Rotobloc MV Metal Enclosed LSC2A-PI with air insulated LBS;
- Minibloc-6 MV Metal Enclosed LSC2A-PM with SF6 insulated LBS;
- Normoduct MV and LV Buducts;
- Prefabricated substations.



Normoclad MV Switchboard LSC2B-PM

MV SF6 insulated Load Break Switch



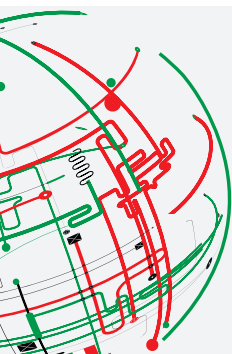
The Equipment Division projects and manufactures:

- Indoor MV Load Break Switches and Disconnectors (Air or SF6 gas-insulated) up to 36 kV;
- Circuit breakers;
- Earthing Switches for panel/wall mounting solutions.

IMEQUADRI DUESTELLE S.p.A. | Via Provinciale, 568
24059 Ugnano (BG) • Italy
Tel. +39 035 481 4211
Fax +39 035 481 4333

commerciale.quadri@imequadriduestelle.it • www.imequadriduestelle.it

Contact • Matteo Galimberti



New Arel S.r.l. has been active since 1965 in the design and production of Safety Interlocking Systems, Camlocks and Handles.

The Company works with professionalism in order to guarantee systems capable of preventing accidents caused by human errors.

For this purpose, provides professional advice during the design phase of end users and it is able to offer personalised solutions.

The quality of our production has made us partner of trust to numerous renowned companies in the energy sectors (power, railway and marine mostly).



Products:

1. Safety Interlocking Devices (Bolt Locks - Exchange Boxes - Door Locks), Camlocks & Handles

NEW AREL S.r.l. | Via Carnevali, 14 • 20158 Milano (MI) • Italy

Tel. +39 02 393 10516

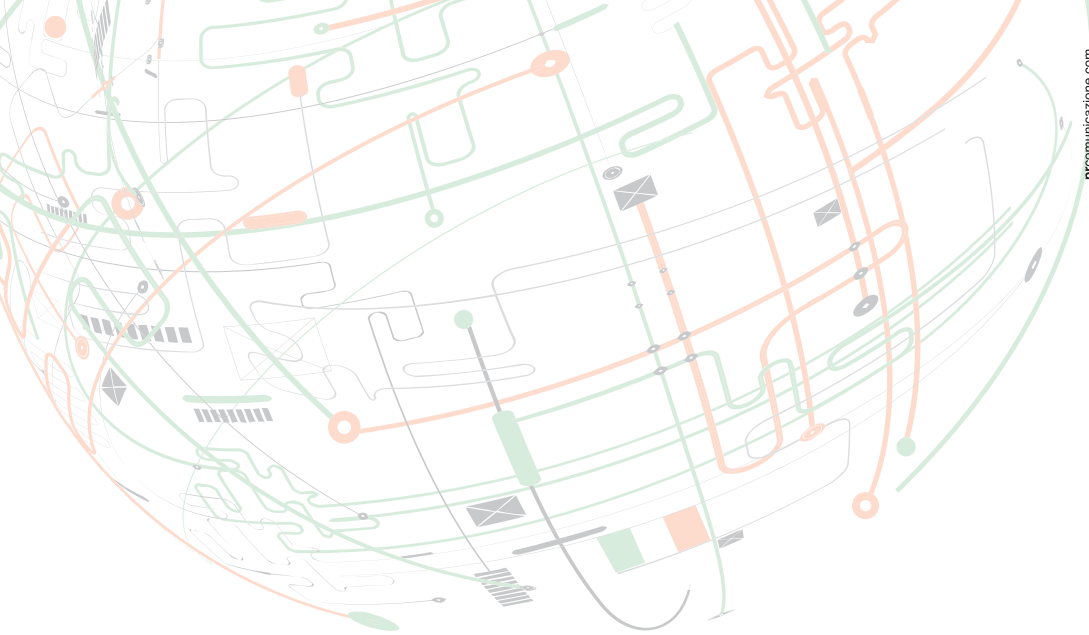
Fax +39 02 393 13518

info@newarel.com • g.frigo@newarel.com

www.arel-locks.com • www.newarel.com

Contact • Gianpaolo Frigo





ITALIA
EXPO MILANO 2015

