

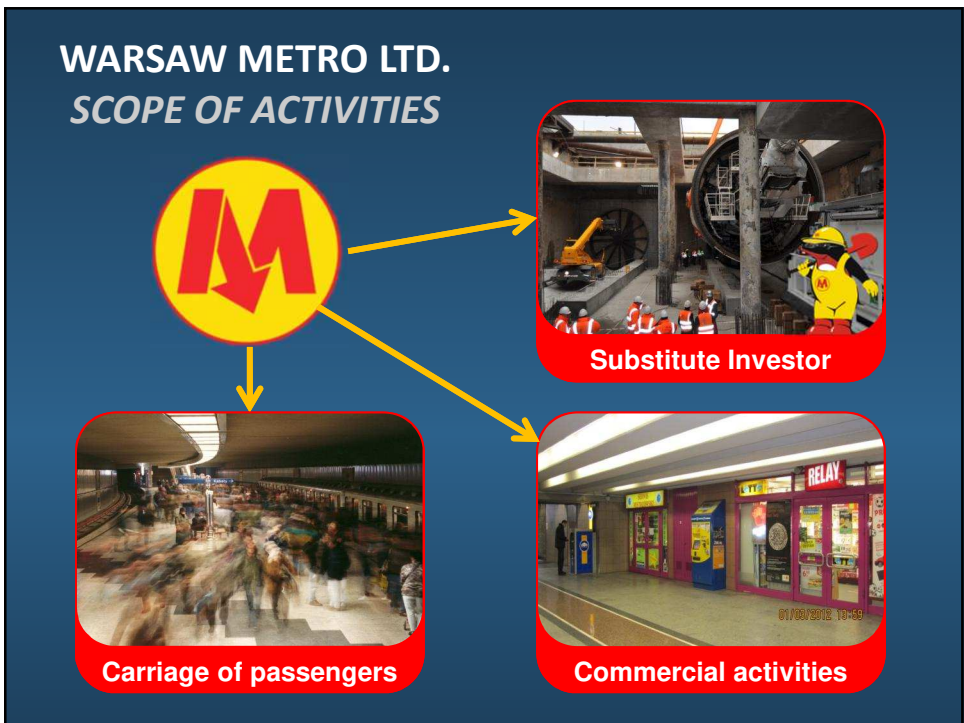
 **Development of the second metro line**



**WARSAW METRO LTD.**

**Jerzy Lejk**  
President of the Board, CEO

Warsaw, March 2018



**M** WARSAW METRO Ltd.

## DEVELOPMENT OF THE SECOND METRO LINE

**METRO LINE 2**  
**21 stations**  
**23 km**

The map illustrates the development of Metro Line 2 in Warsaw, divided into four main sections:

- 3rd Stage:** 3 stations, 3,9 km, Depo (yellow callout)
- 2nd Stage:** 2 stations, 2,1 km (purple callout)
- 1st Stage:** 3 stations, 3,4 km (green callout)
- Central Section:** 7 stations, 6,5 km (orange callout)
- 2nd Stage:** 3 stations, 3,9 km (blue callout)
- 1st Stage:** 3 stations, 3,1 km (blue callout)

A small cartoon character of a worker in a yellow suit and hard hat is visible in the bottom right corner of the map area.

**M** WARSAW METRO Ltd.

# THANK YOU FOR YOUR ATTENTION

*Jerzy Lejk*  
President of the Board  
CEO

The cartoon character is a stylized figure wearing a yellow hard hat with the 'M' logo, yellow overalls with the 'M' logo, and red boots. It is holding a red shovel over its shoulder.

[www.metro.waw.pl](http://www.metro.waw.pl)